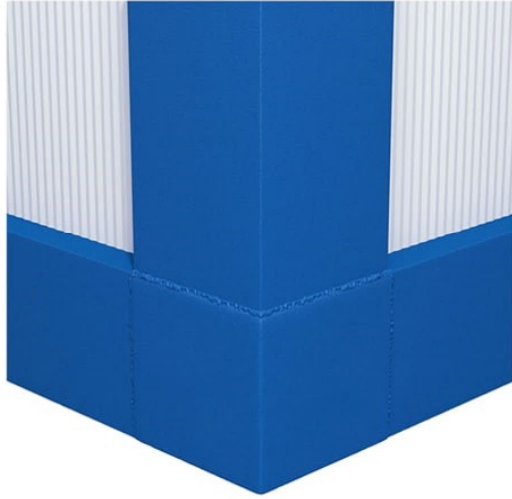


# Hi-FIX Containers vs. Hi-FLEX Ones

## FRAME STRUCTURE

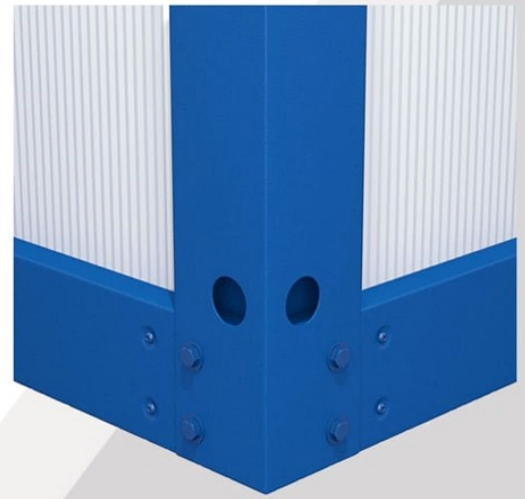
### HI-FIX

Profiles joined by welding



### HI-FLEX

Profiles joined by screw



## FLOOR

### HI-FIX

- 2 mm ZN100, DX51 perimetral cold-formed galvanised steel structure, reactively primed and painted according to the RAL range ;
- support by 0.8 mm ZN100, DX51 floor corrugated sheets ;
- 18 mm waterproof Egger OSB ;
- Tarkett 2 mm AC4 class PVC high traffic linoleum

### HI-FLEX

- 1.5 mm ZN100, DX51 perimetral cold-formed galvanised steel structure, reactively primed and painted according to the RAL range ;
- support by 1.5 mm galvanised steel U-type profiles ;
- 16 mm waterproofed fibre cement ;
- AC4 class 1.5 mm Tarkett PVC linoleum

## ROOF

### HI-FIX

- 2 mm ZN100, DX51 perimetral cold-formed galvanised steel structure, reactively primed and painted according to the RAL range ;
- 30 mm PUR sandwich panel ;
- (0.4 mm) ZN100, DX51 double rabbet galvanised steel sheet ;
- C1 ISOVER/Ursa-compliant 100 mm stone wool ;
- anti-condensation film ;
- support by 1 mm U-type galvanised steel profiles

### HI-FLEX

- 1.5 mm ZN100, DX51 perimetral cold-formed galvanised steel structure, reactively primed and painted according to the RAL range ;
- 40 mm RAL 9002 roof-type 3-fold sandwich panel